

**June Food Stamp Participation Jumps 1 Percent**

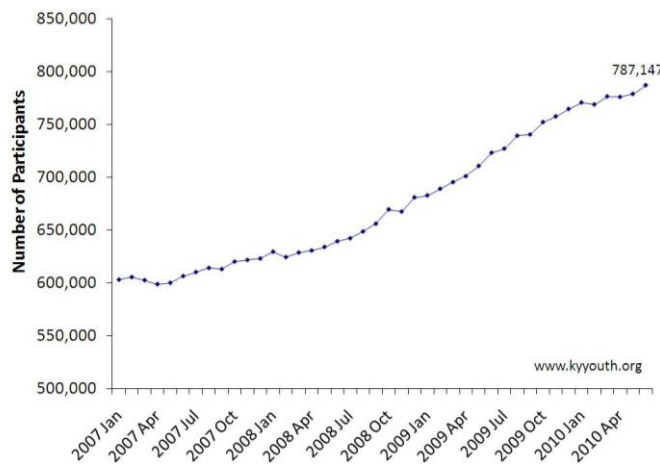
Continued Growth in Participation Shows Continued Need for Supports for Families

After a slight decrease in April, food stamp participation increased in May and peaked in June. Food stamp usage is a good indicator of the level of need for government assistance. Working Kentuckians are still relying on this important support during the recession. Kentucky’s Food Stamp Program, part of the federal Supplemental Nutrition Assistance Program (SNAP), helps people buy food who have little or no money.

The number of people receiving food stamps in June increased by about 8,000, since May 2010. Participation is significantly higher than it was at the start of the recession, with over 155,000 more people using food stamps to purchase food compared to January 2008. June’s increase indicates that the need for support in Kentucky remains high as [high unemployment](#) persists.

Kentucky families received some good news last week when [Congress passed the extension of jobless benefits](#). While this will provide some needed relief to families struggling with unemployment during the current recession, severe cuts to the state budget are still preventing full economic recovery. By extending financial assistance to the state, which is scheduled to run out by the end of 2010, Congress can help Kentucky balance its budget with fewer cuts to services helping families struggling now.

June Food Stamp Participation up 25 Percent Since start of Recession



Source: Cabinet for Health and Family Services: Division of Family Support.

To access this issue and archives of the Kentucky Economic Watch, visit:  
[http://www.kyyouth.org/Issue\\_Areas/budget/KentuckyEconomicWatch.html](http://www.kyyouth.org/Issue_Areas/budget/KentuckyEconomicWatch.html).

**Kentucky Youth Advocates** is home to the Kentucky Tax and Budget Initiative. We work to promote an adequate, sustainable and transparent budget upon which we can build strong public structures and the long-term economic vitality of the Commonwealth. Funding is provided by the Annie E. Casey Foundation and the Stoneman Family Foundation.